

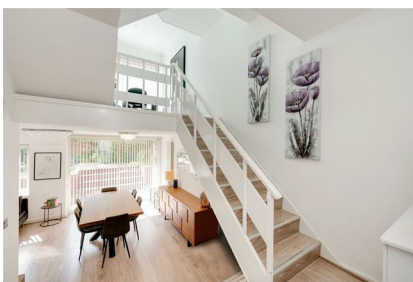
# Parkheath

*Sold on Service*

---

**Belsize Road NW6**

**£5,200 PCM (£1,200 per week) - Camden Band G**



Well presented 4 bedroom family house

Secure driveway with electric gates and off street parking for 2 cars

Contemporary fitted kitchen

2 bathrooms plus guest WC

Pets considered

West Hampstead Office 020 7794 7111

1629 Sq Ft / 151 Sq M

Spacious town house arranged over 3 floors

2 generous reception rooms

Ideally located for transport links of Swiss Cottage and Finchley Road

EPC: Rating D, Council Tax: Camden Band G

# Belsize Road

Approximate Gross Internal Area = 151 sq m / 1629 sq ft

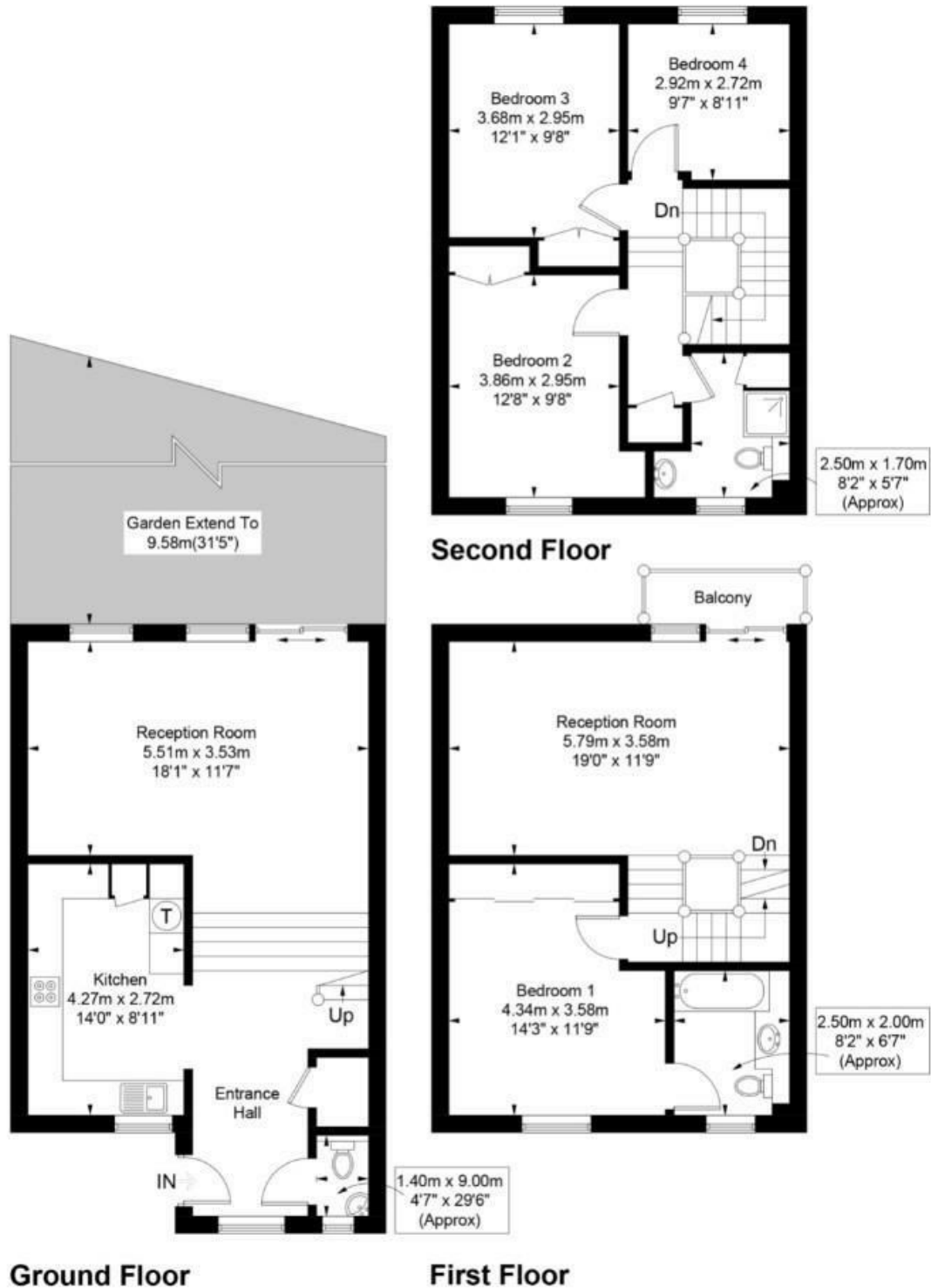


Illustration for identification purposes only, measurements are approximate, not to scale. FloorplansUsketch.com © 2017 (ID393388)  
ELLIE CLAIRE PHOTOGRAPHY LTD

The particulars do not constitute part of an offer or contract. The particulars, including text, photographs and plans, are for the guidance only of prospective purchasers/tenants and must not be relied upon as statements of fact. The descriptions provided therein represent the opinion of the author and whilst given in good faith should not be construed as statements of fact. Nothing in these particulars shall be deemed a statement that the property is in good condition or otherwise or that any services or facilities are in good working order. All measurements are approximate